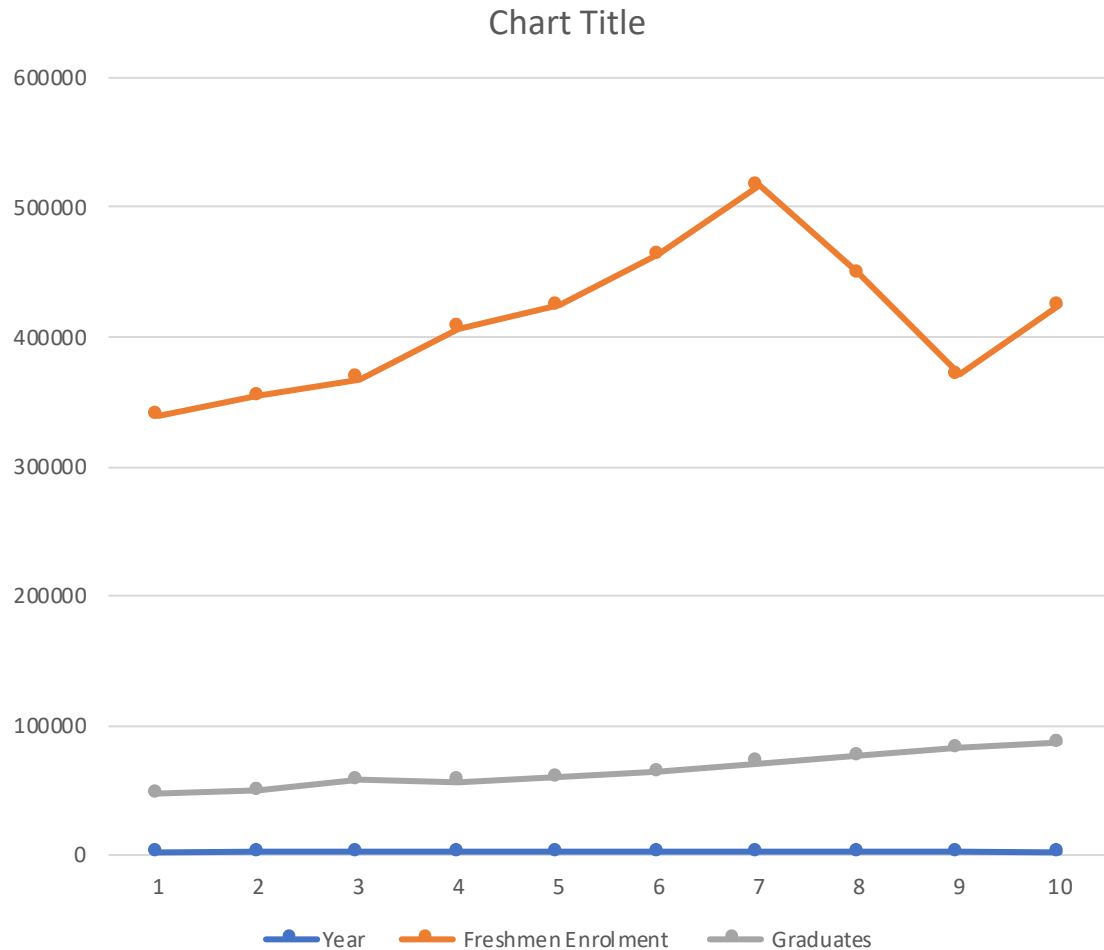


Engineering and Technology Enrolment and Graduates Statistics

Academic Years 2009 - 2018

Philippines

Engineering and Technology Enrolment



Year	Freshmen Enrolment	Graduates
2009	339,045	47,468
2010	354,321	49,373
2011	367,620	57,439
2012	406,831	56,690
2013	424,143	59,399
2014	463,221	63,539
2015	517,010	70,646
2016	448,550	76,423
2017	370,710	82,794
2018	424,269	86,860

Attrition and Retention (last 5 years)

Year	Attrition	Retention
2014	85%	15%
2015	85%	15%
2016	85%	15%
2017	82%	18%
2018	77%	23%

Challenges...

- Attrition is too high
- Develop programs for the drop outs
- Strengthen Technologist and Technician Programs
- Promote more Engineering programs
- Government intervention on Engineering and Technology programs.